

APPENDIX 13.3

Background Noise Levels, background plus 5 trendline with the predicted noise levels against a noise limit of 45 dB(A) at each receptor

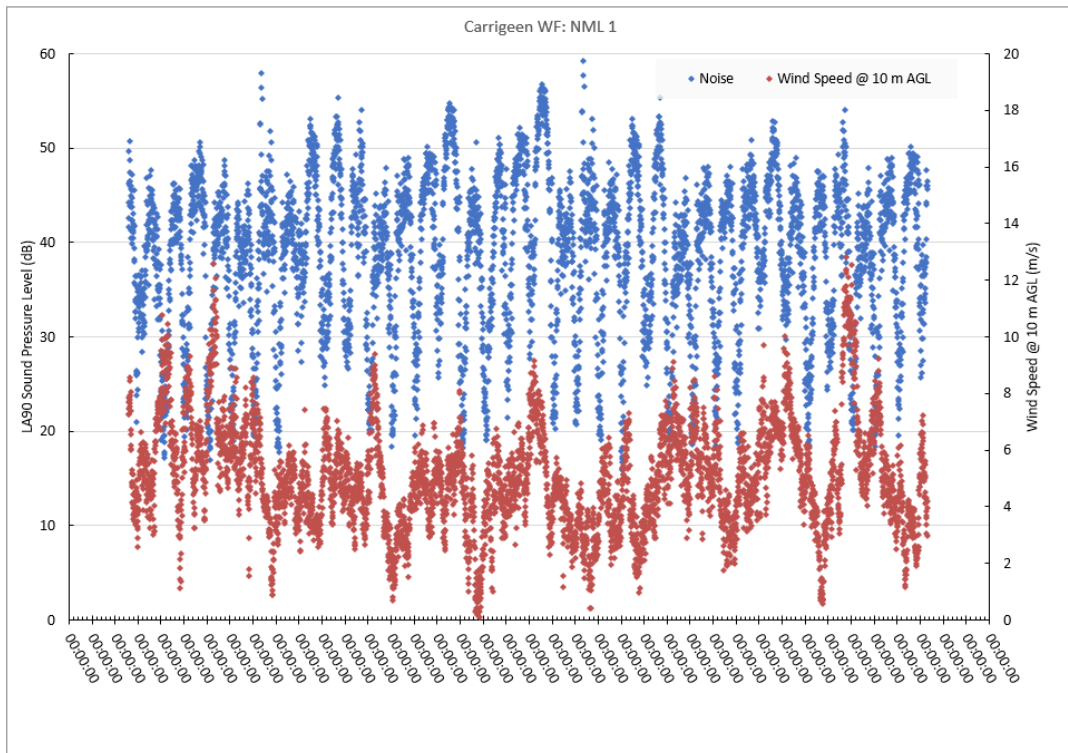


Chart 10.1: NML 1, comparing the background noise level and wind speed over the measurement period

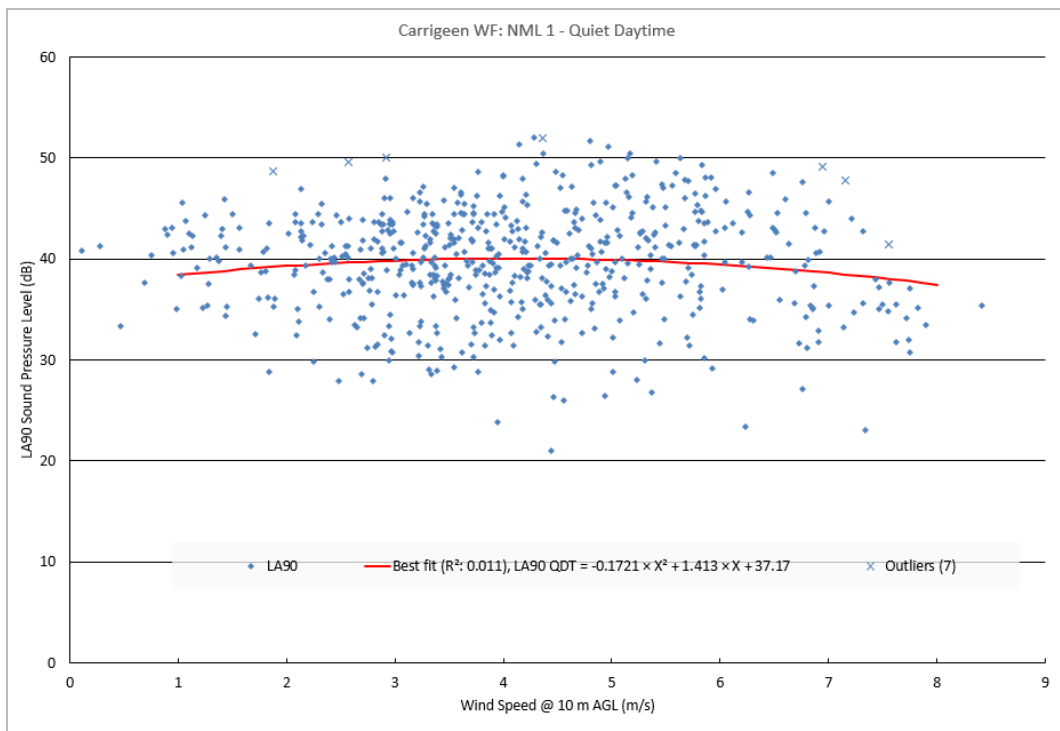


Chart 10.2: NML 1 for quiet daytime, background noise level, predicted level and assessment limit

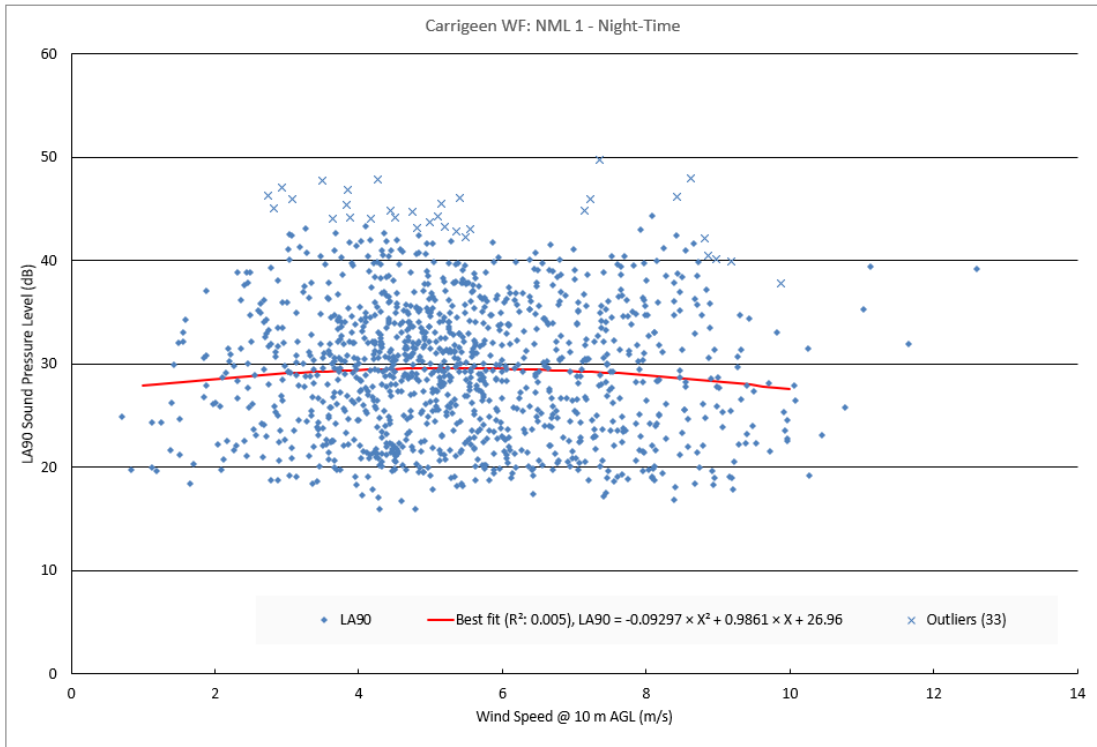


Chart 10.3: NML 1 for night-time, background noise level, predicted level and assessment limit

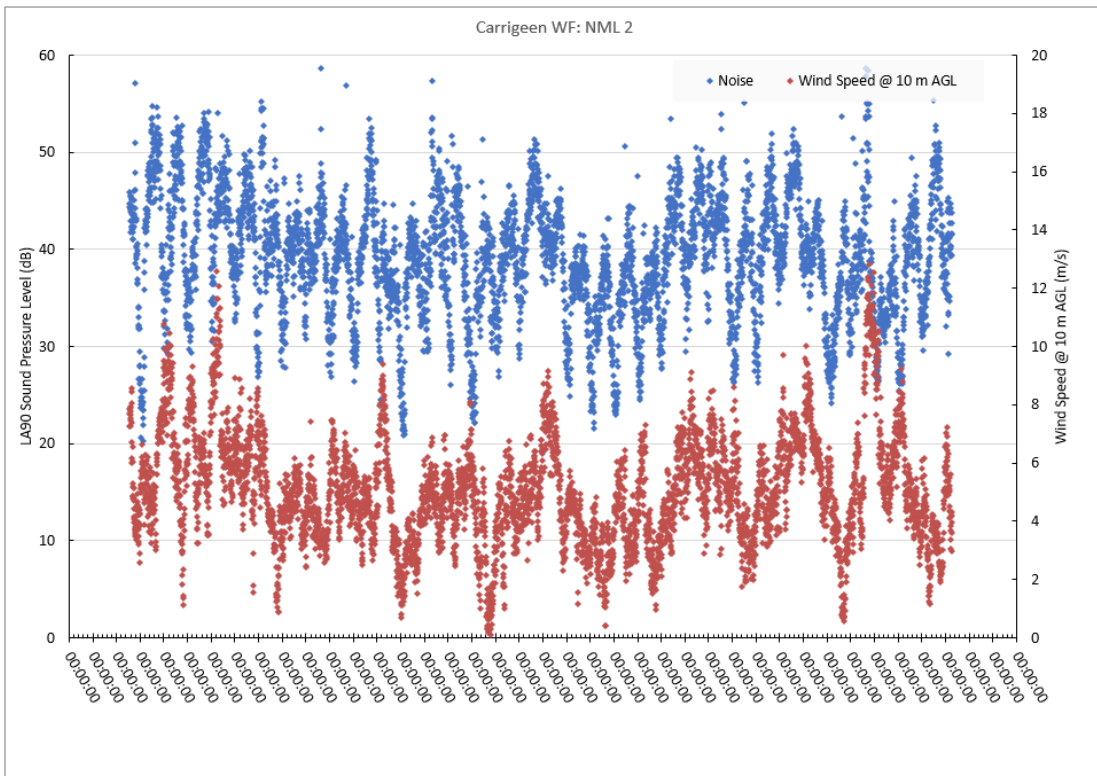


Chart 10.4: NML 2 comparing the background noise level and wind speed over the measurement period

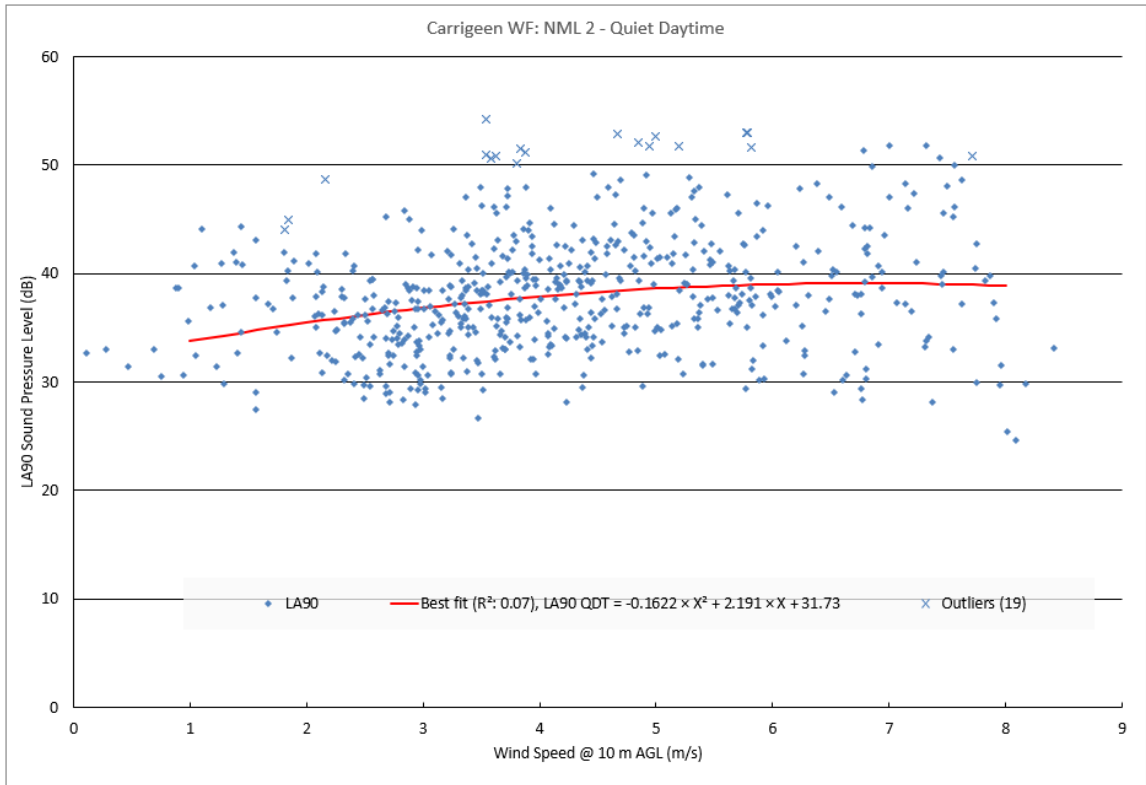


Chart 10.5: NML 2 for quiet daytime, background noise level, predicted level and assessment limit

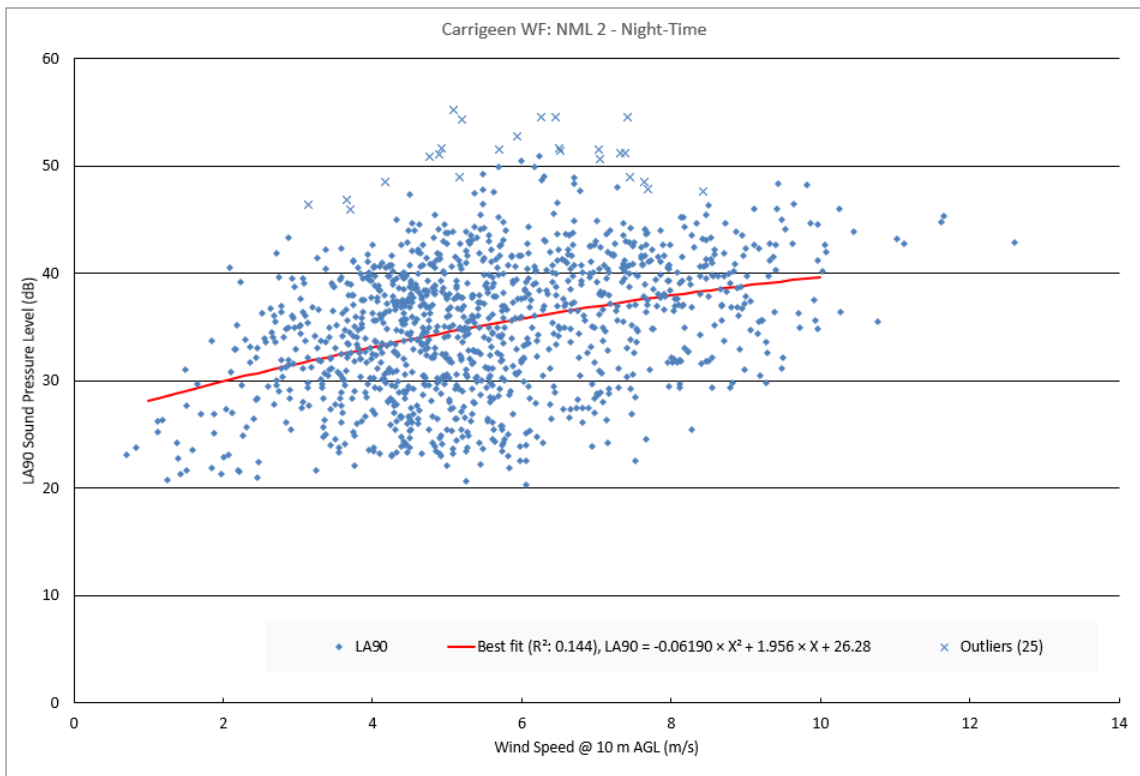


Chart 10.6: NML 2 for night-time, background noise level, predicted level and assessment limit

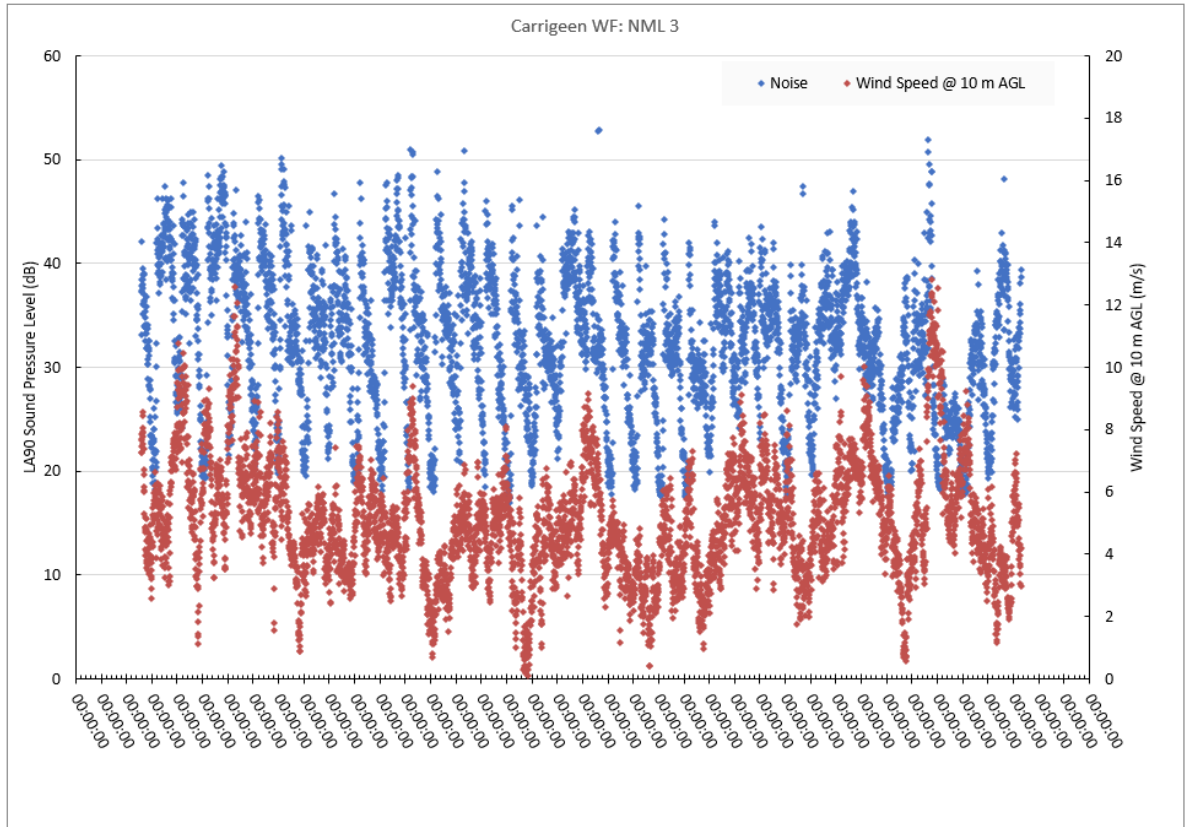


Chart 10.7: NML 3 comparing the background noise level and wind speed over the measurement period

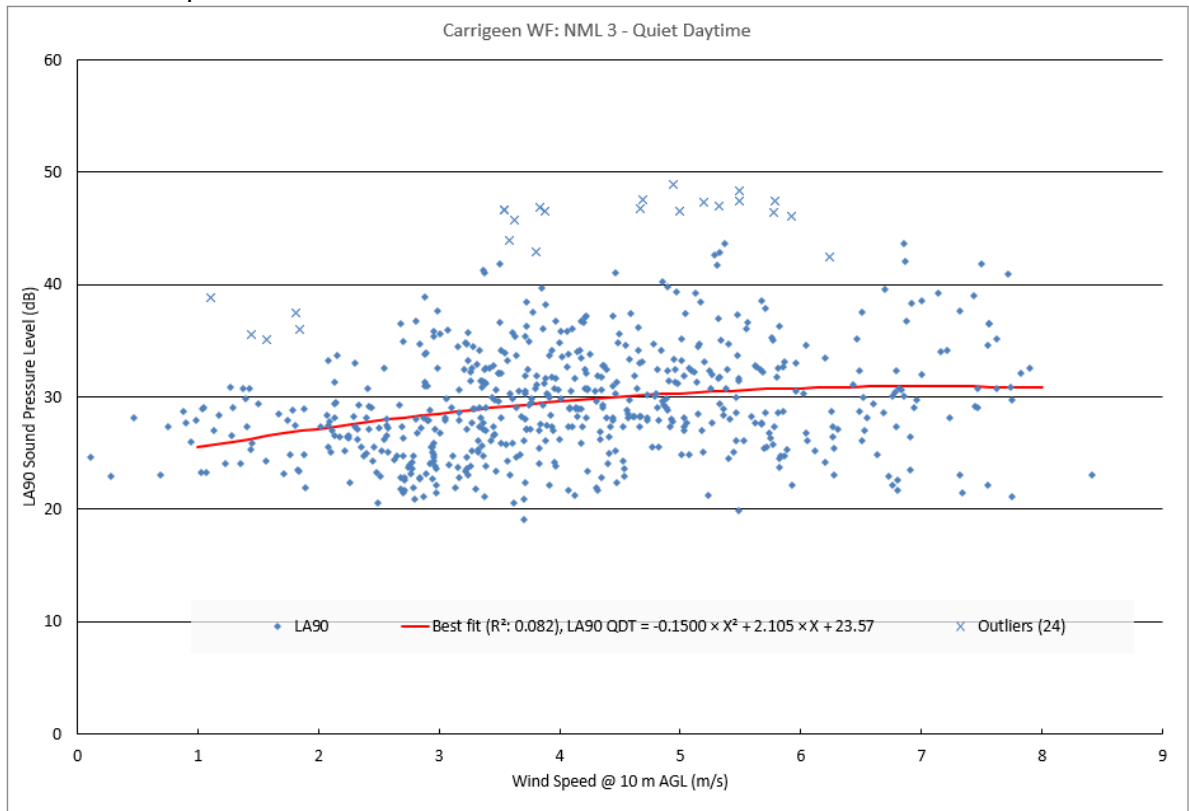


Chart 10.8: NML 3 for quiet daytime, background noise level, predicted level and assessment limit

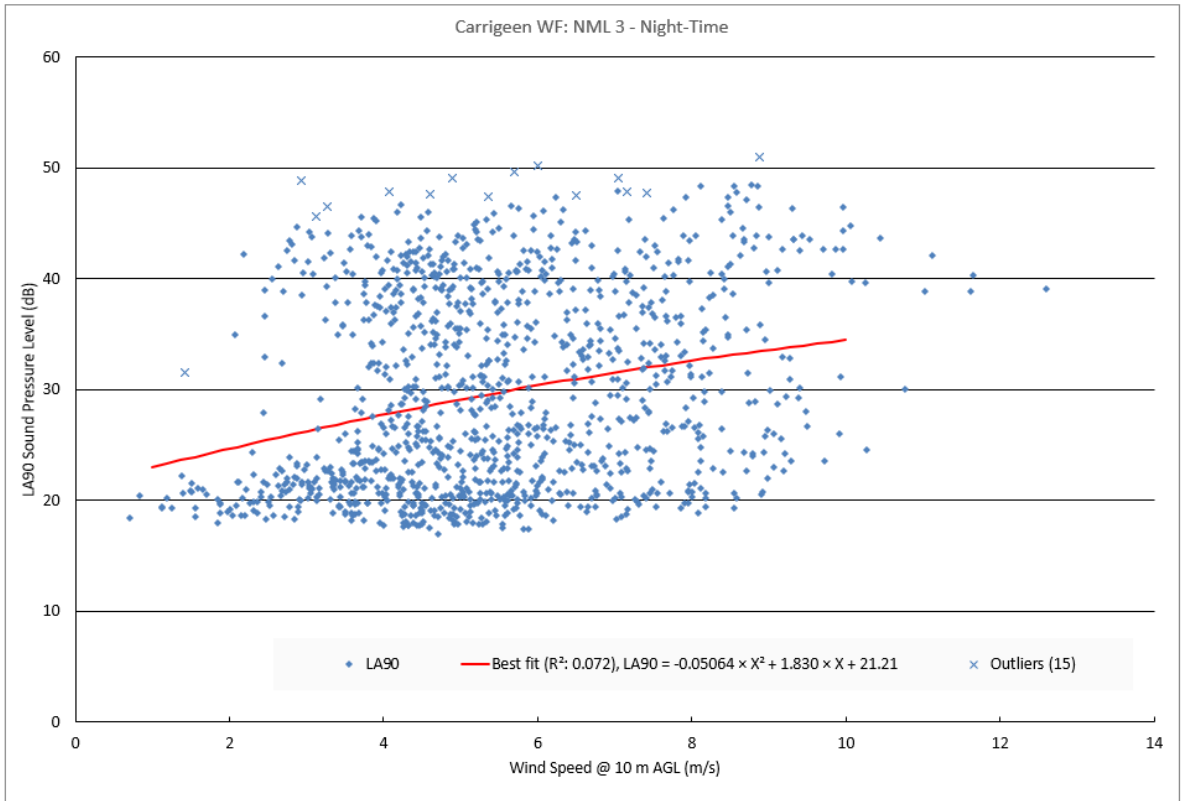


Chart 10.9: NML 3 for night-time, background noise level, predicted level and assessment limit

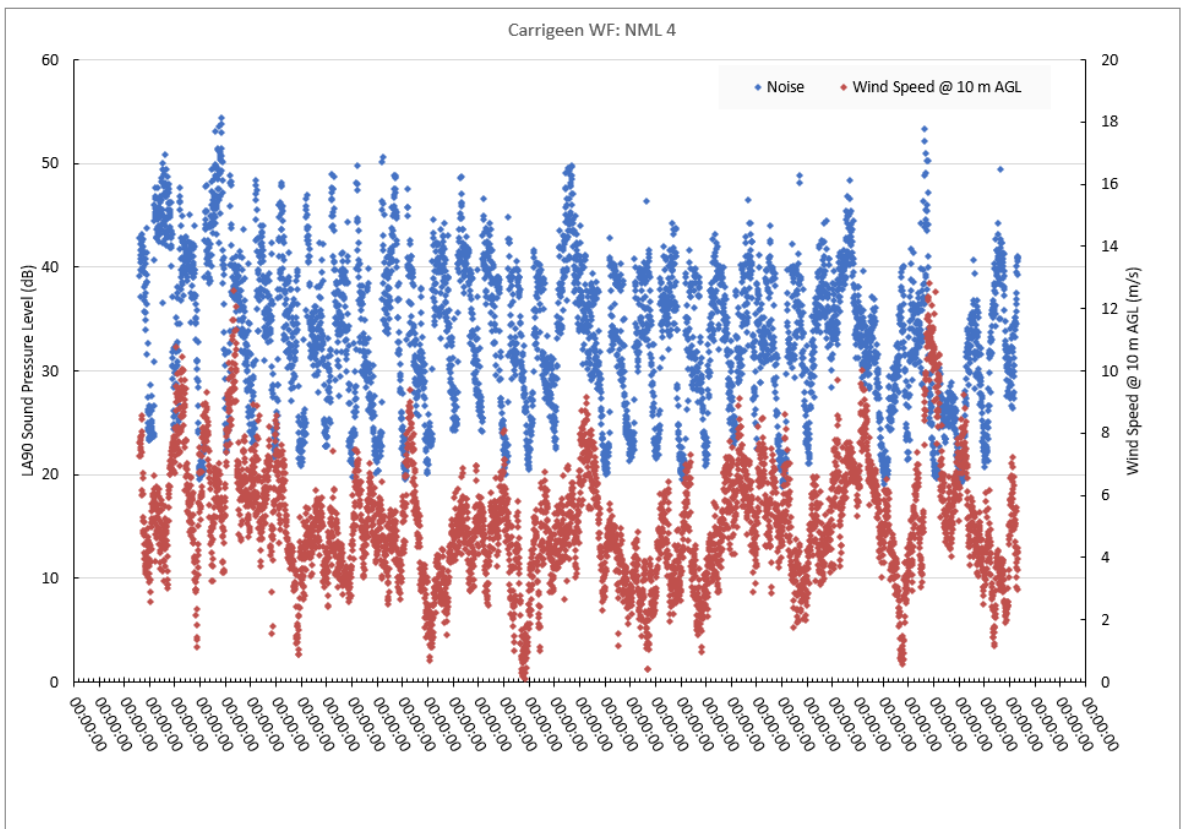


Chart 10.10: NML 4 comparing the background noise level and wind speed over the measurement period

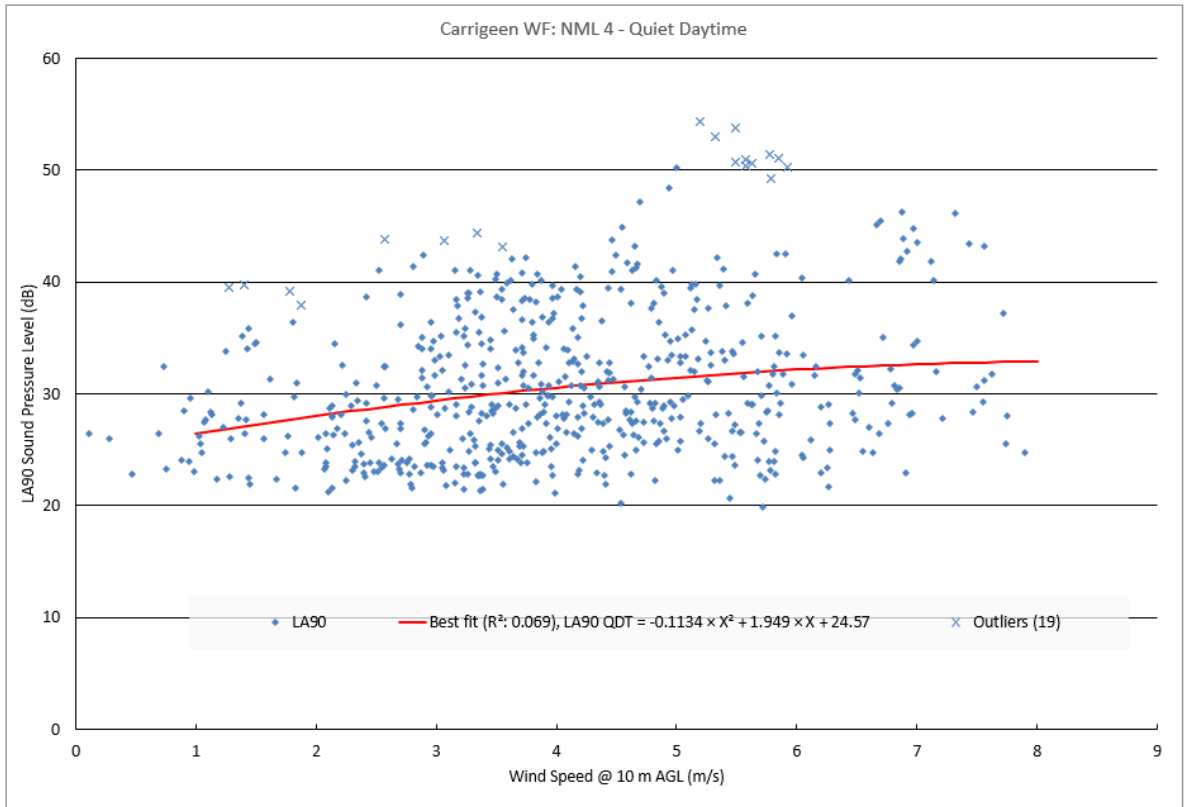


Chart 10.11: NML 4 for quiet daytime, background noise level, predicted level and assessment limit

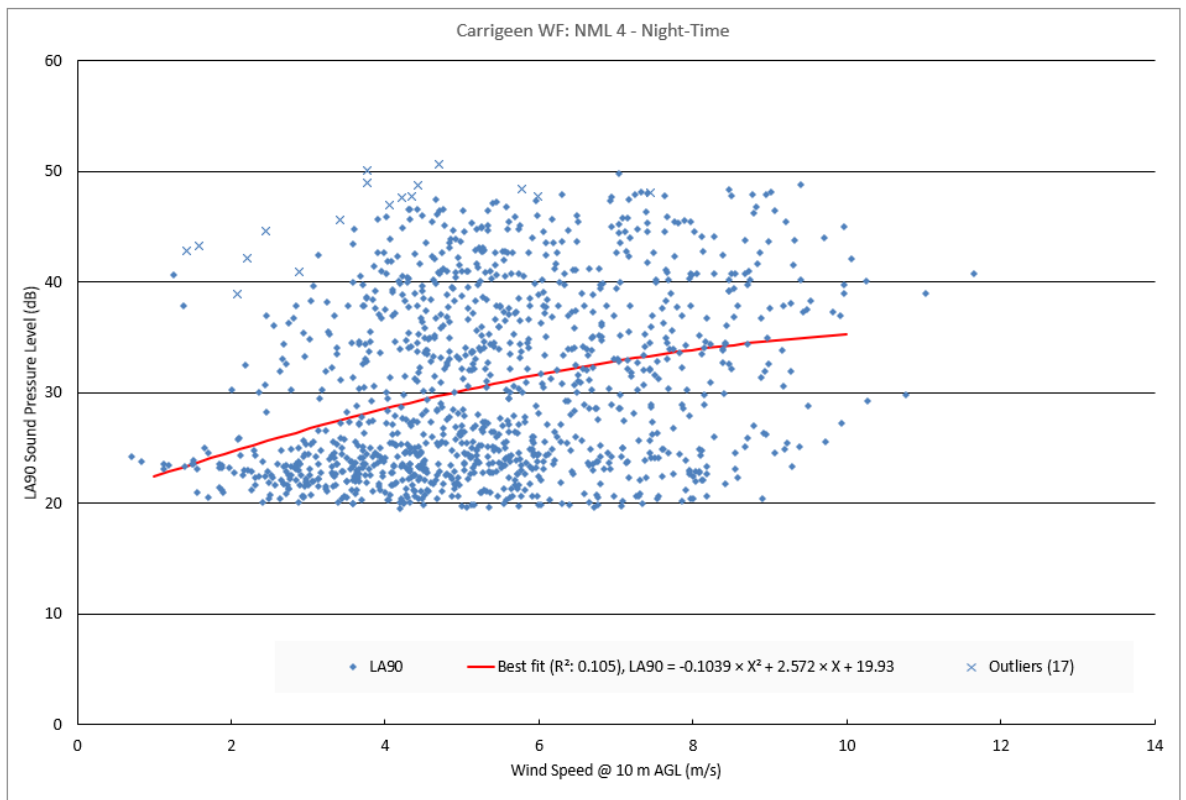


Chart 10.12: NML 4 for night-time, background noise level, predicted level and assessment limit

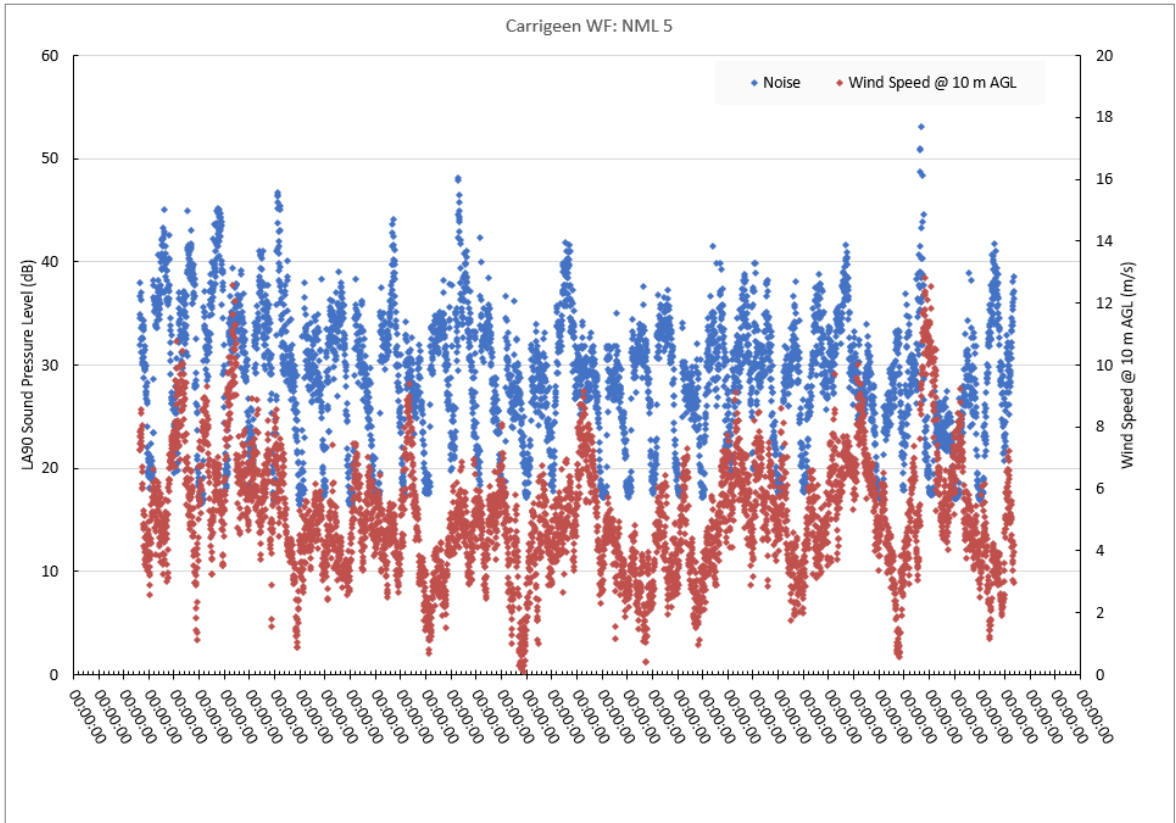


Chart 10.13: NML 5 comparing the background noise level and wind speed over the measurement period

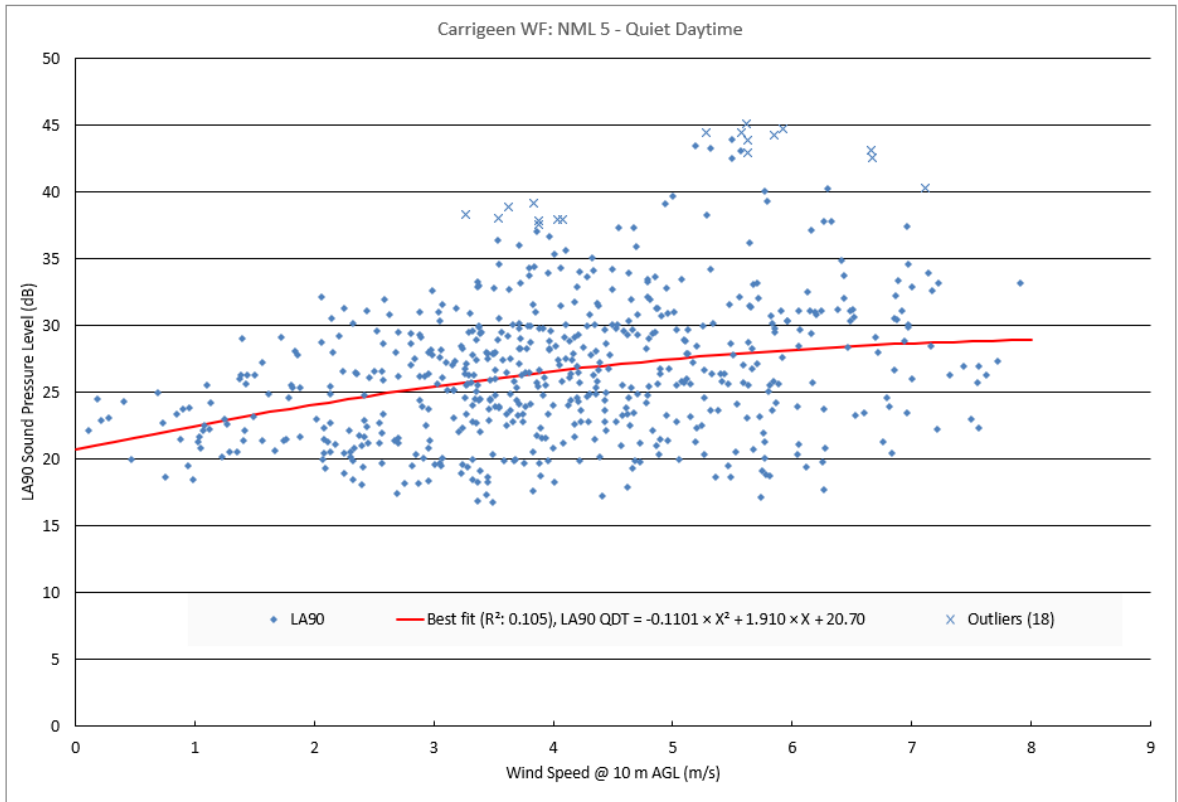


Chart 10.14: NML 5 for quiet daytime, background noise level, predicted level and assessment limit

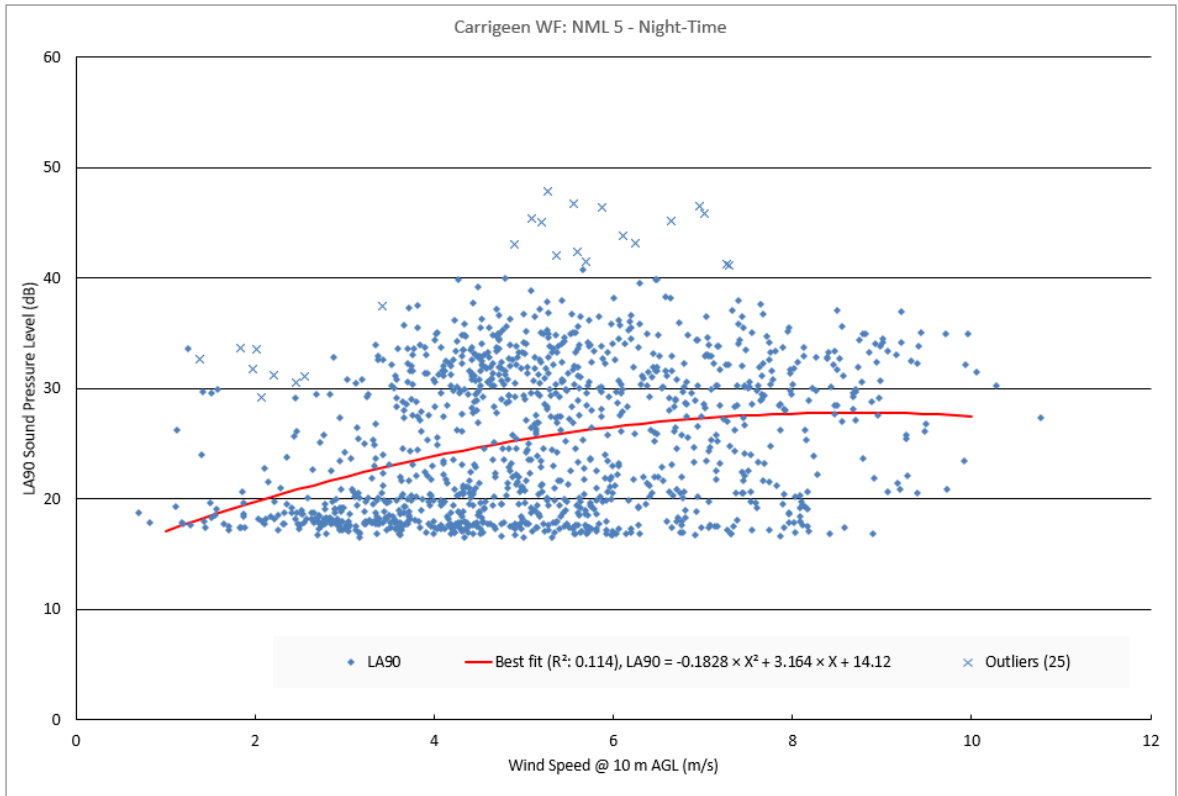


Chart 10.15: NML 5 for night-time, background noise level, predicted level and assessment limit

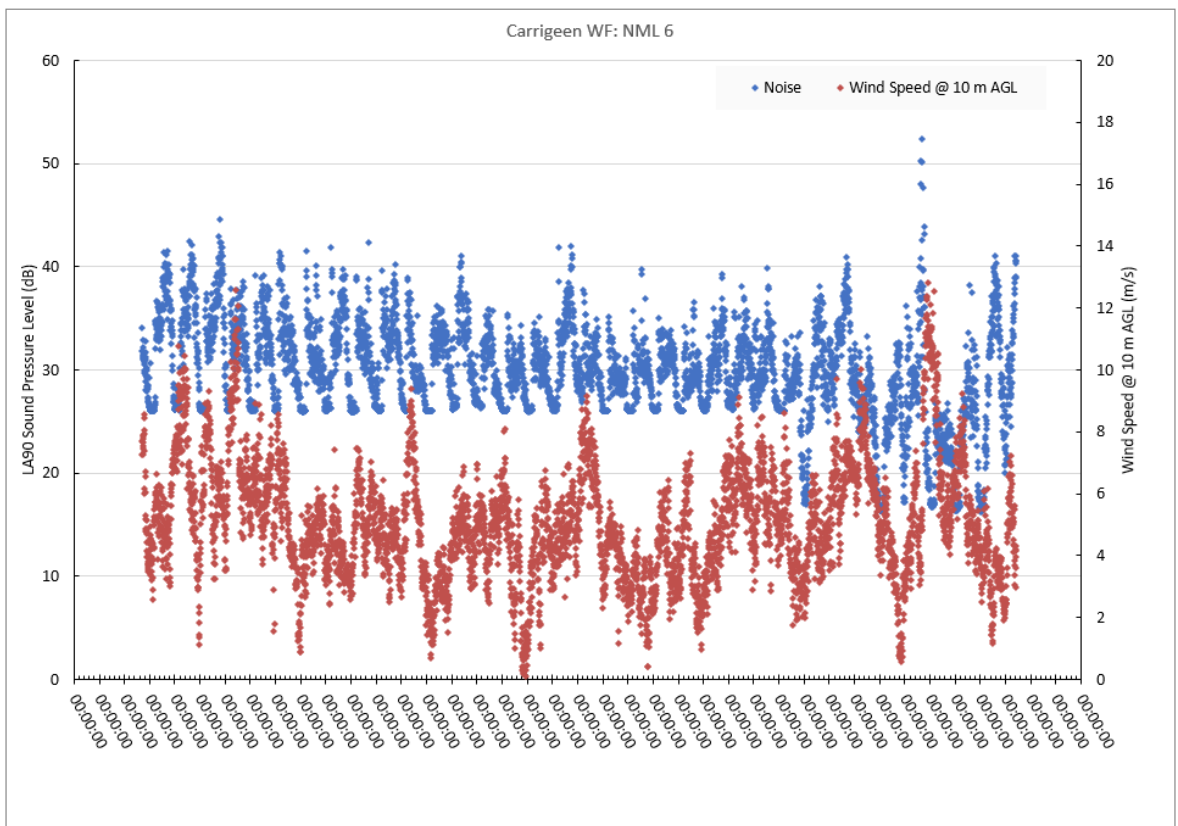


Chart 10.16: NML 6 comparing the background noise level and wind speed over the measurement period

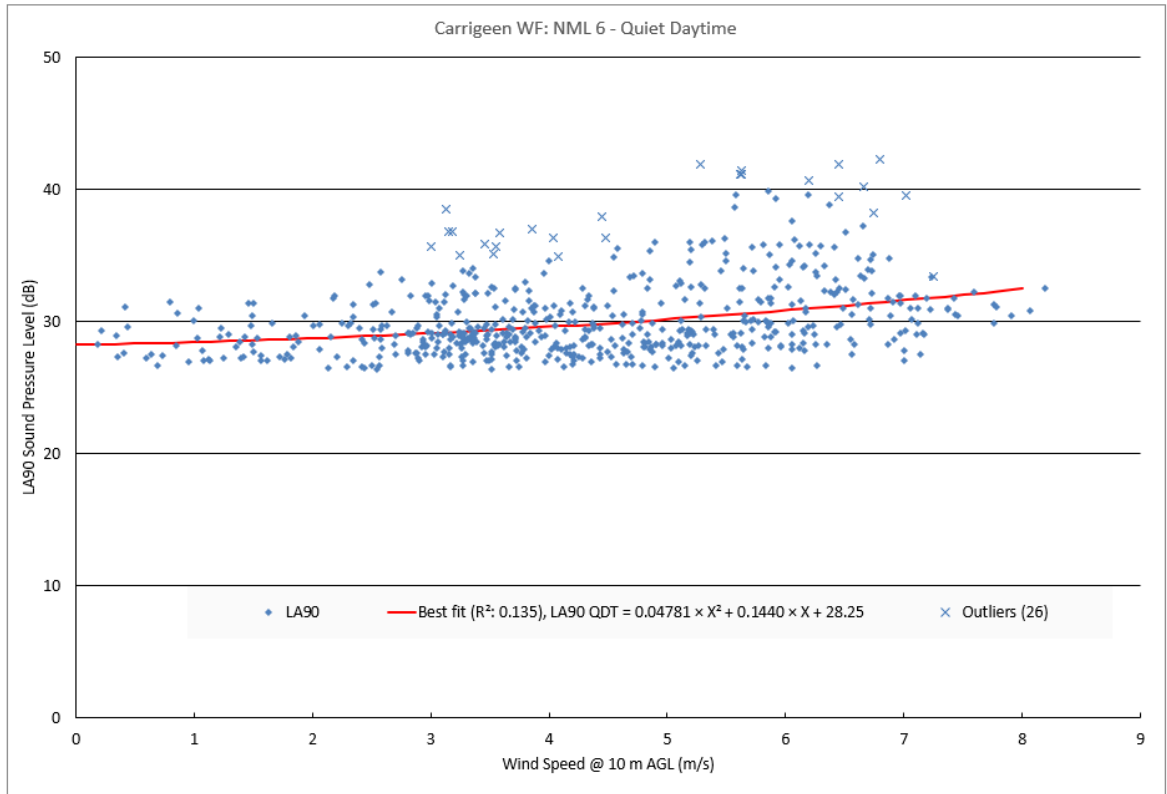


Chart 10.17: NML 6 for quiet daytime, background noise level, predicted level and assessment limit

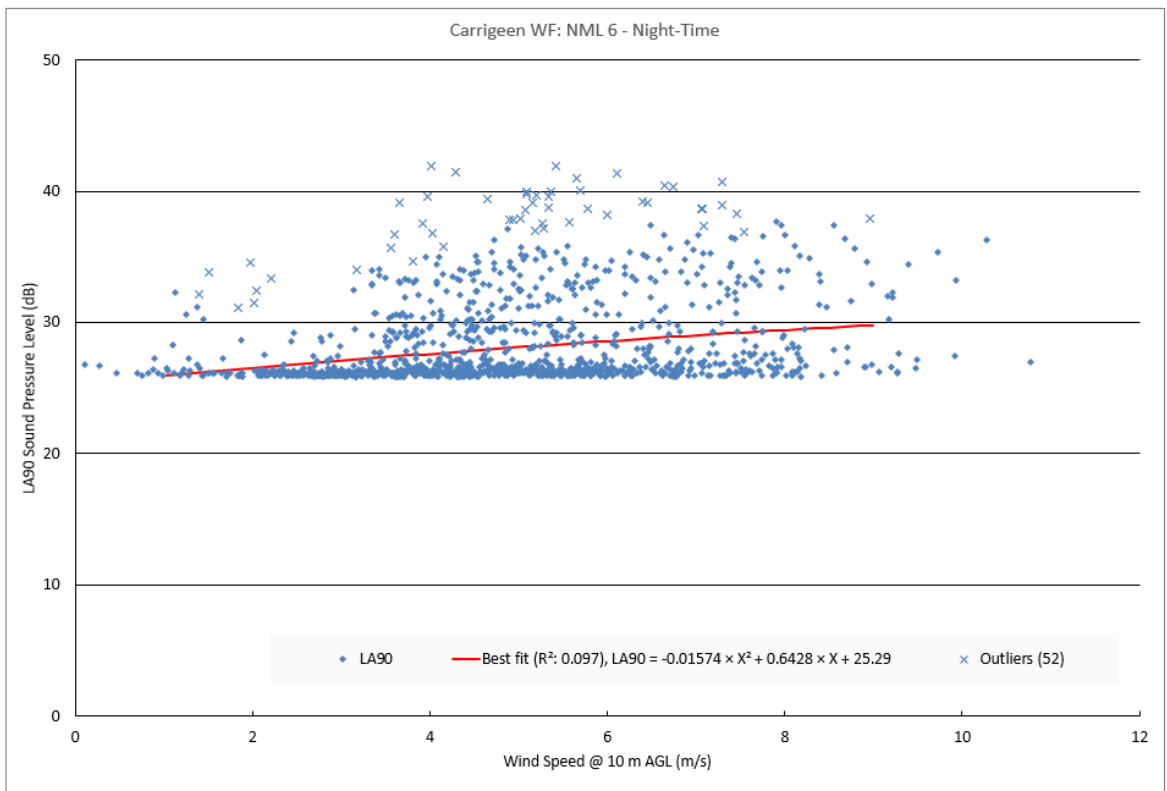


Chart 10.18: NML 6 for night-time, background noise level, predicted level and assessment limit